

Draft Regulator Installation

Installation is to be completed by properly licensed heating and boiler technicians that have also been trained and certified by ECMI for installation of the Draft Regulator. It's important that the regulator is installed, adjusted and set properly to maximize the fuel saving benefit. At the time of installation the boiler or furnace is also adjusted to work in concert with the Regulator.

Prior to installation the equipment is tested and prior fuel bills are examined to ensure that there is a suitable application for the Regulator. If the application makes sense, then the installation proceeds. Typically there is one unit installed in the flue stack for each boiler or furnace in the building, so one installation could involve several Regulators.

Here are some pictures that show various stages of a typical atmospheric installation:



STEP 1: Pre Installation Flue Gas Analysis



STEP 2: Cutting Out of Section of Venting to Accommodate Regulator



STEP 3: Final Removal of Old Venting Section



STEP 4: Installation and Adjustment of the Regulator in Boiler Venting



STEP 5: Securing unit



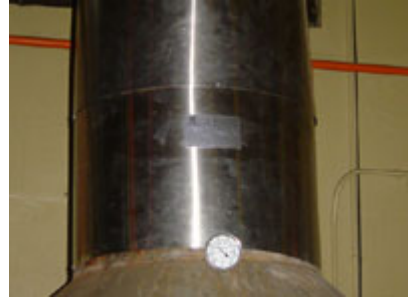
STEP 6: Post Installation

Regulator To Venting



STEP 7: Final Adjustments to Boiler to Optimize Running with the Regulator

Flue Gas Analysis



STEP 8: Completed Installation